



PAPER TESTING ASSOCIATION

LABORATORY Testing Equipment



UNIVERSAL TENSILE MACHINE MTC-100(500)/ MTC-100(500)L

Code. 030101/03/04/05

To carry out numerous type of test on different materials

Standards : ISO 1924/1, ISO 1924/2, ISO 12625-9, UNE-EN ISO 12625-5, UNE-EN ISO 527-3, TAPPI T456, T494, T549, BS 4415/2, DIN 53 134, etc..



Sold & serviced by:

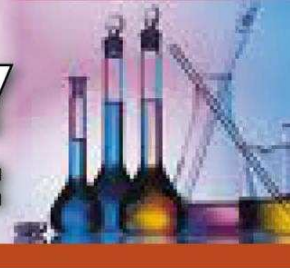
OpTest Equipment Inc.

www.optest.com - sales@optest.com - +1-613-632-5169



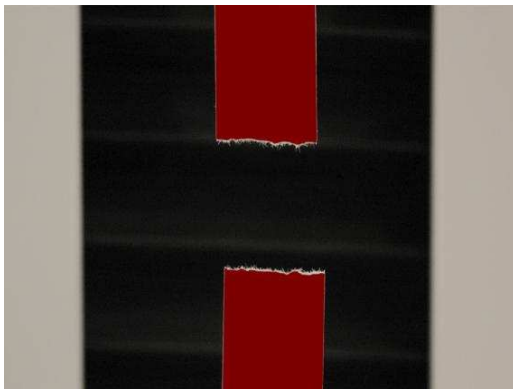
PAPER TESTING ASSOCIATION

LABORATORY Testing Equipment



CHARACTERISTICS :

- Easy adaptation of the machine for testing different type of materials by means of exchanging the testing accessories and the load cell (paper, cardboard, plastic film, rubber, textile, etc.).
- Possibility of carrying out tensile and compression tests, including, among others, friction tests, peel tests, puncture tests, etc.
- High rigidity steel and aluminum frame.
- Driven by servo motor and high accuracy ball screw.
- Adjustable feet for the equipment leveling.
- Emergency push button.
- Internal pneumatic circuit for air supply connection (when using pneumatic grips).
- CE mark.
- Measuring range from 0 to 1.000 N for MTC-100(L) models and from 0 to 5.000 N for MTC-500(L) models.
- Maximum travel : 500 mm and 750 mm (L model). Consult your provider about other extensions.
- Testing and approaching speeds between 0.2 and 750 mm/min.
- Security. Electronic (programming) and physical (limit switches) overload protection.
- RS-232 interface for connection to management and control programs.
- USB connection for maintenance works and for connection with USB printer.



• F
o
r
c
e

r
e
a
d
i
n
g

s with a resolution of 0.004 % of the FS, and extension readings with a resolution of 0.01 mm.

- Accuracy. <1% of the applied force in a range between 2% and 100% of the FS.

Sold & serviced by:

OpTest Equipment Inc.

www.optest.com - sales@optest.com - +1-613-632-5169



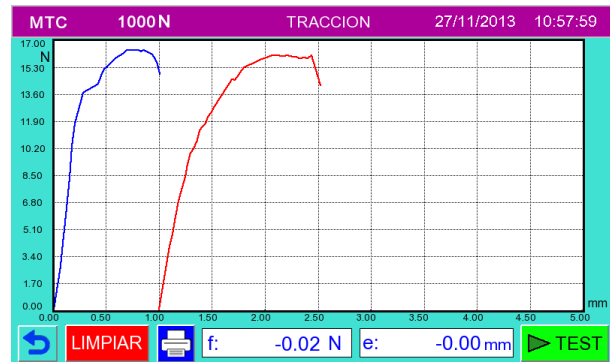
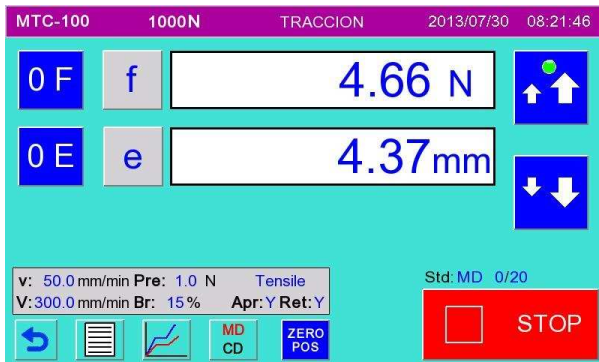
PAPER TESTING ASSOCIATION

LABORATORY Testing Equipment



USER INTERFACE :

- Machine controlled by means of a touch screen and two auxiliary buttons.
- Through the visualization and control screen, the total control and configuration of the machine can be managed.
- Easy and intuitive operation of the control menu, configurable in different languages.
- Possibility of selecting and defining multiple test results. Two result tables with a maximum of 10 result types and 20 test results per table.
- Possibility of display the test results in graphic way.
- Statistical control. Mean value, standard deviation and maximum and minimum values.
- Different configurable units for the force, extension and speed parameters.
- Test maneuver with automatic return to initial position at maximum speed (750 mm/min).
- Setting of different breaking and preload levels.
- Periodical programme updatings (without additional costs).



Sold & serviced by:

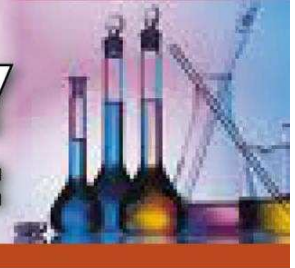
OpTest Equipment Inc.

www.optest.com - sales@optest.com - +1-613-632-5169



PAPER TESTING ASSOCIATION

LABORATORY Testing Equipment



SOFTWARE CONTROL (Optional) :

The machine, through its RS-232 connection, allows the total control and management of the test, by means of the PTA NOVILOG Software. It will be possible to preset tests, save test results graphical curves, carry out test reports, etc.

CONNECTIONS :

Eléctrical : 220/110V, 50/60Hz

Air : 6 Bar

WEIGHT AND DIMENSIONS (ONLY MACHINE) :

MTC-100(500) 480x397x900 mm (WxLxH) . 50 Kg

MTC-100(500)L 480x397x1205 mm (WxLxH). 55 Kg

WEIGHT AND DIMENSIONS WITH PACKING BOX :

MTC-100(500) 700x630x1150 mm (WxLxH) . 105 Kg

MTC-100L(500) 700x630x1450 mm (WxLxH). 115 Kg

Sold & serviced by:

OpTest Equipment Inc.

www.optest.com - sales@optest.com - +1-613-632-5169